



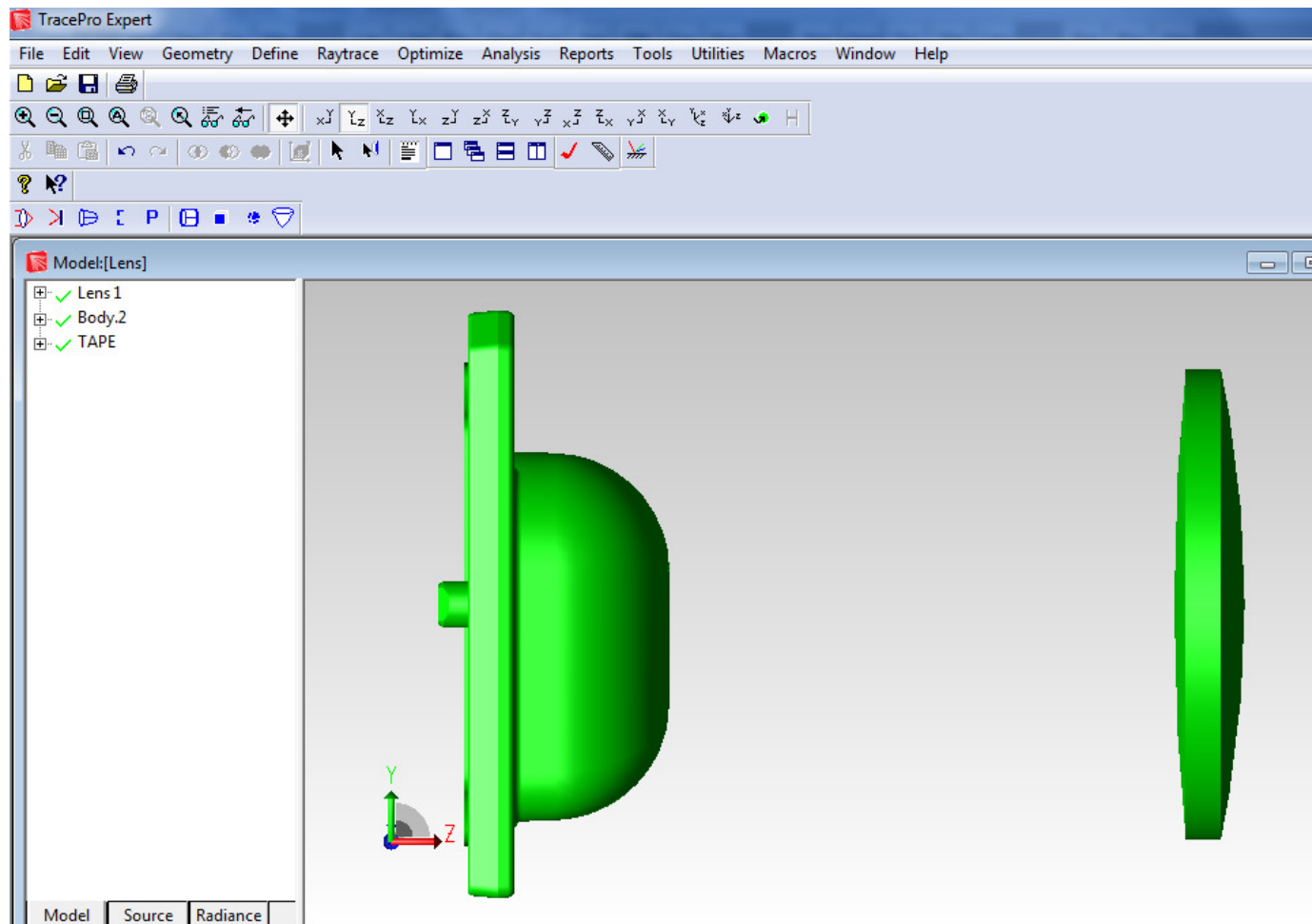
HOW TO EXPORT CAD DRAWING FROM TRACEPRO FOR MECHANICAL DRAWING & FABRICATION?

Email: traceprosoftware@gmail.com;
www.genuineholographics.com



OPEN ANY TRACEPRO FILE

- File > Open

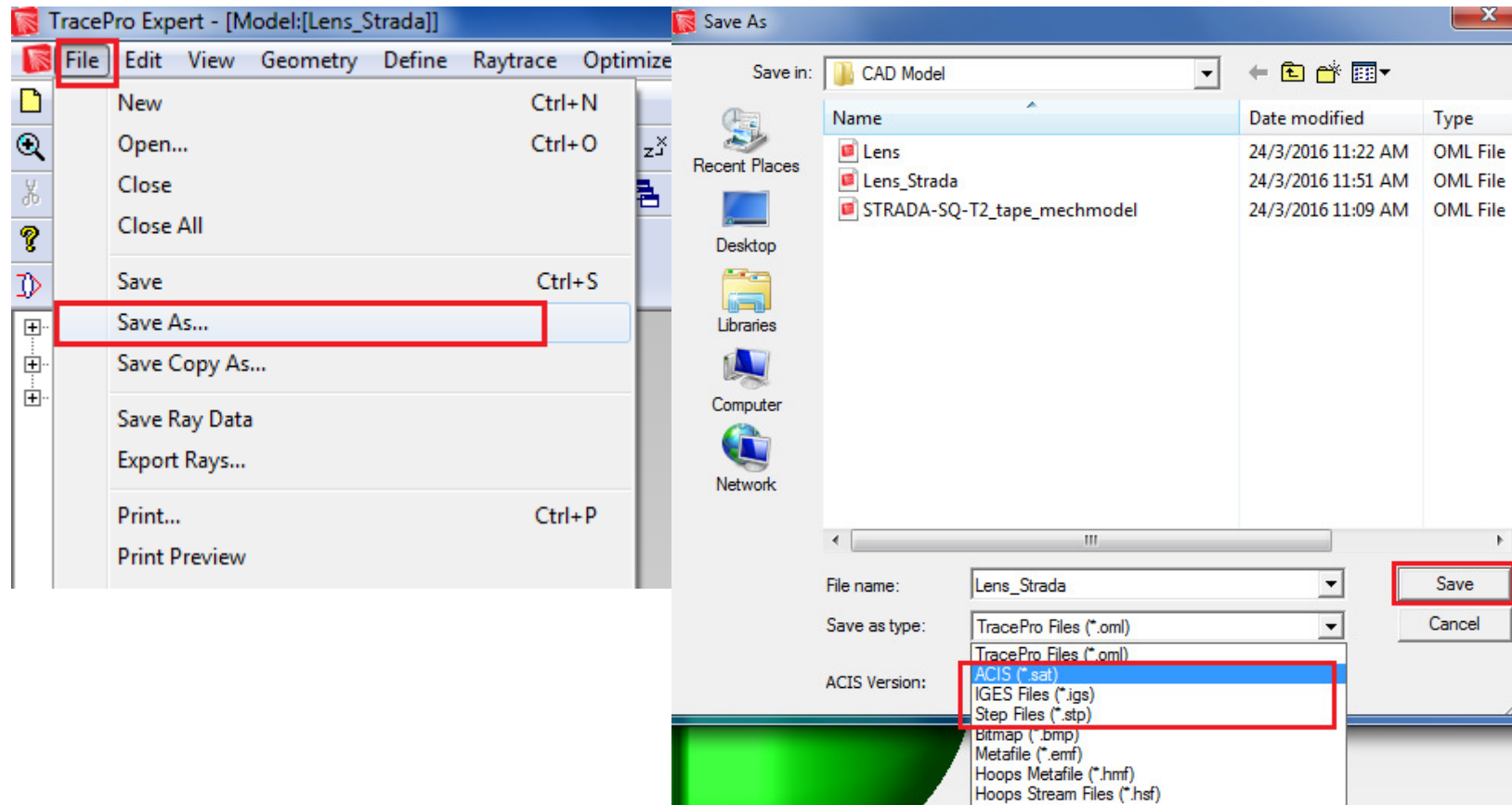


Email: traceprosoftware@gmail.com;
www.genuineholographics.com



EXPORT TO CAD MODEL

- File > Save As > Select Format you want to save



Email: traceprosoftware@gmail.com;
www.genuineholographics.com

DRAWING & DIMENSION

- You can use CAD model and open in any CAD Software (Solidworks, CREO, Inventor, Catia and Others) and create Drawing

