

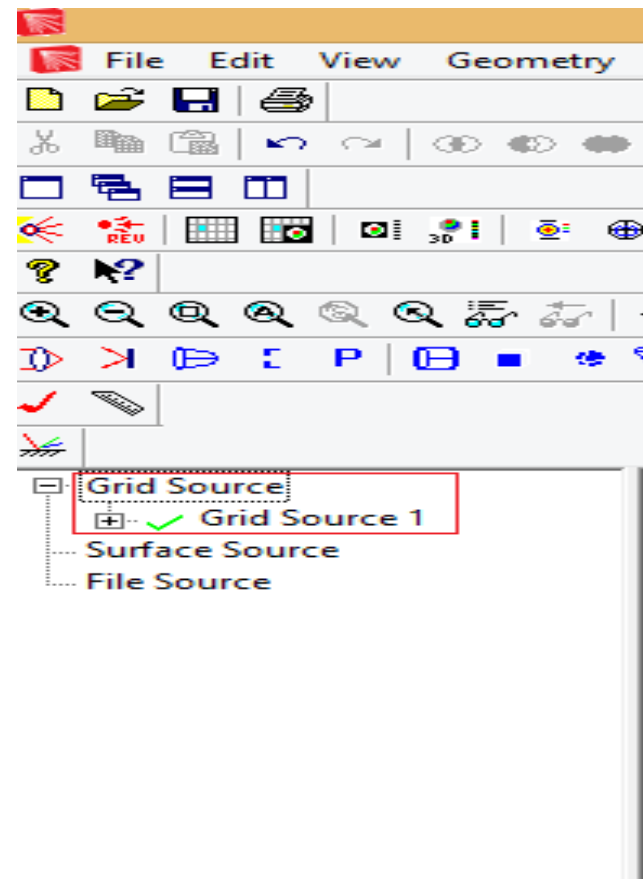


HOW TO DESIGN BEAM SPLITTER IN TRACE PRO

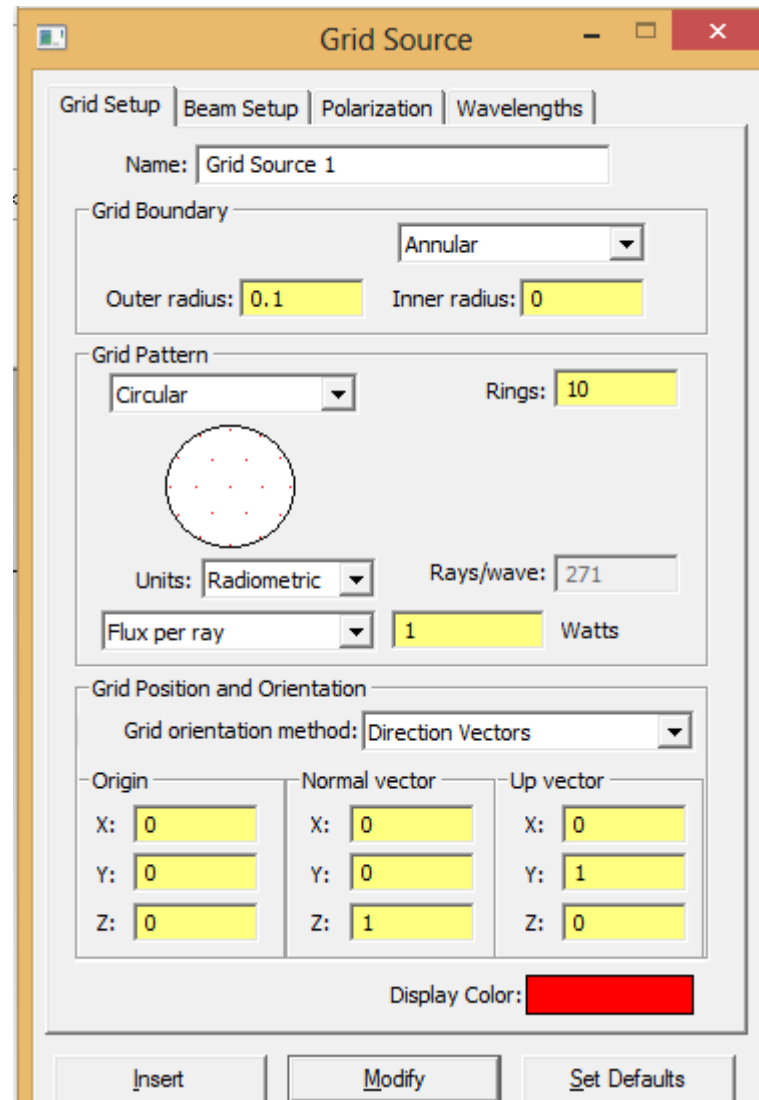
DESIGN BEAM SPLITTER

- Beam Splitter , splits the beam into two separate direction.
- Select grid source > right click > Properties

- Grid Source



- Name : Grid source 1
- Change outer radius
- Pattern : Circular



INSERT LENS

Insert Lens Element

Lens | Aperture | Obstruction | Position | Aspheric

Name: Single lens 1

Units: Radius Thickness: 2

Material

Catalog: SCHOTT Name: BK7

Surface 1

Cylindrical

Radius: 50

Conic: 0

Surface 2

Cylindrical

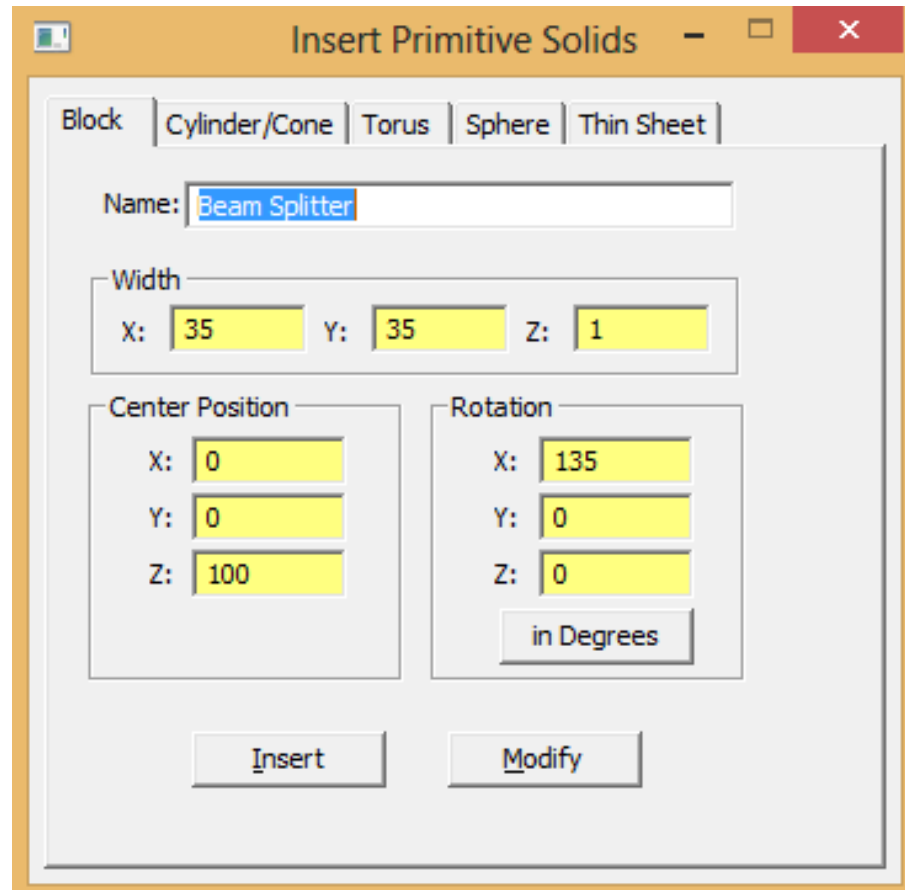
Radius: -50

Conic: 0

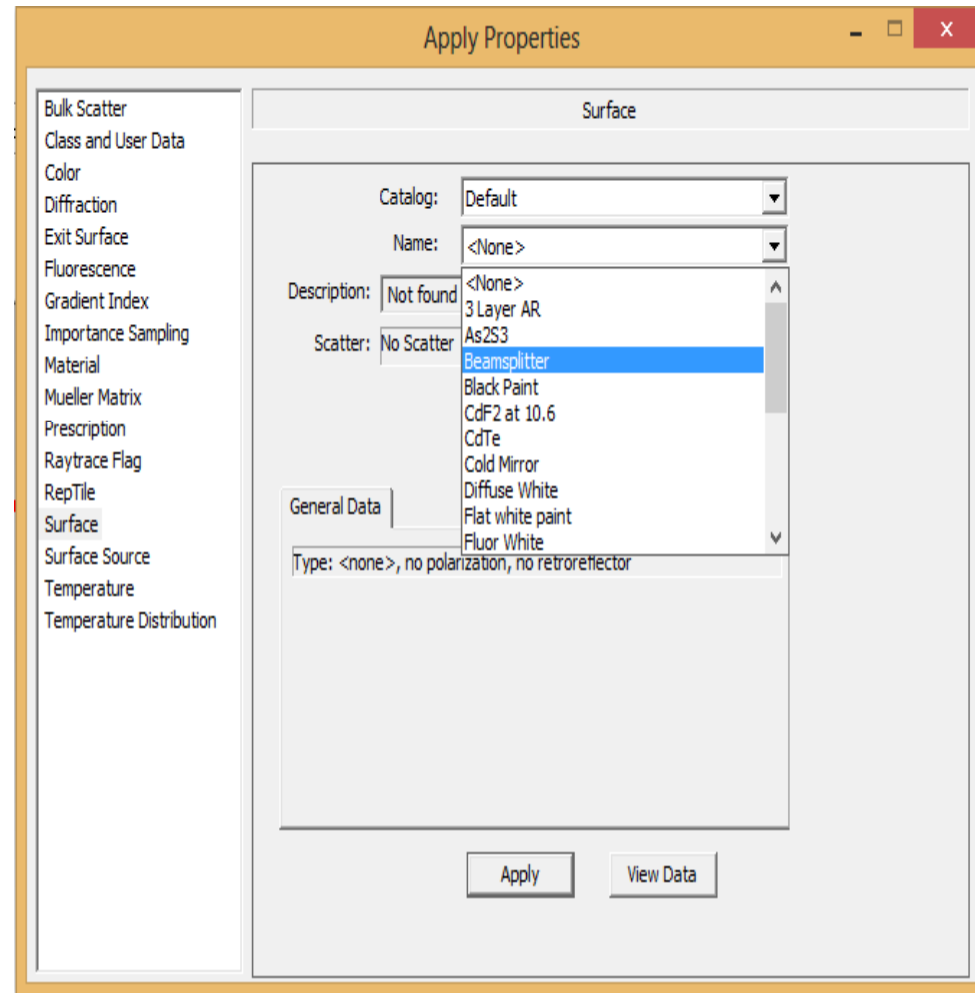
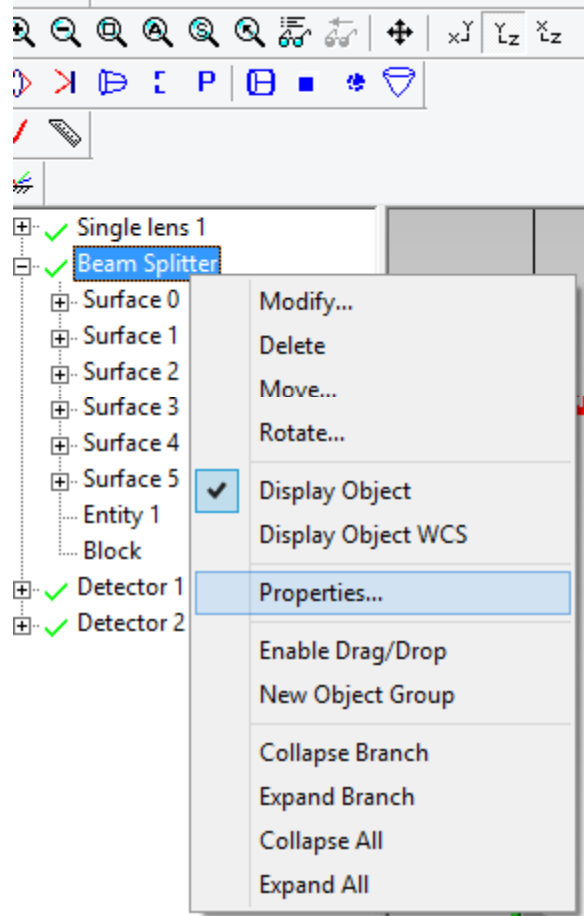
Insert Lens Modify Lens



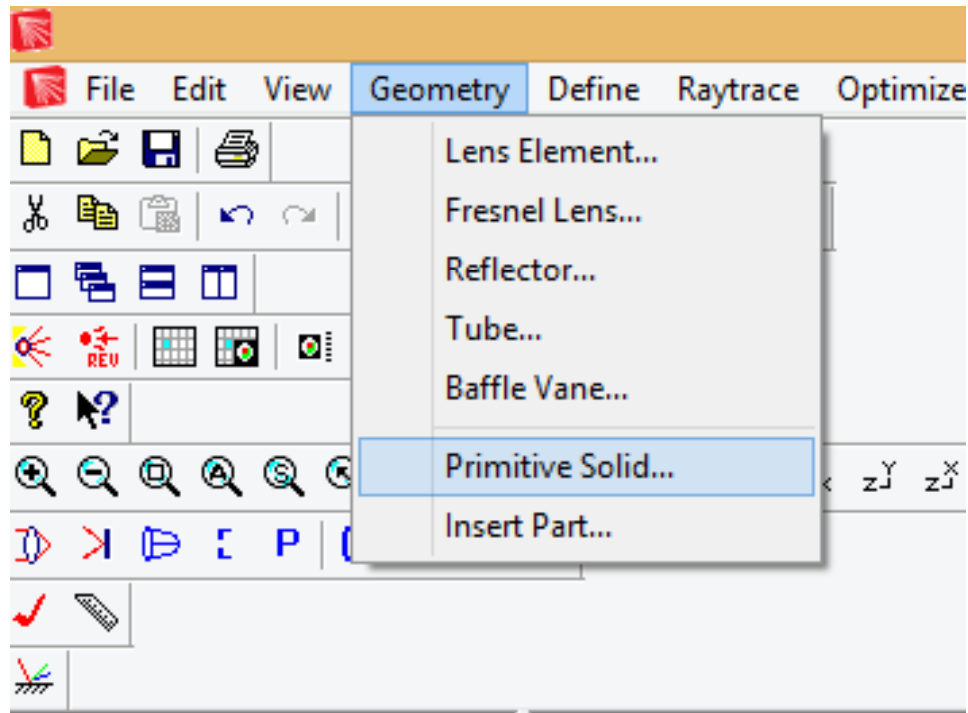
INSERT BEAM SPLITTER



HOW TO GIVE BEAM SPLITTER PROPERTY



INSERT DETECTOR



GIVE PARAMETERS

Insert Primitive Solids

Block | Cylinder/Cone | Torus | Sphere | Thin Sheet

Name:

Width

X: Y: Z:

Center Position

X:
Y:
Z:

Rotation

X:
Y:
Z:



INSERT DETECTOR 2

Insert Primitive Solids

Block | Cylinder/Cone | Torus | Sphere | Thin Sheet

Name:

Width

X: Y: Z:

Center Position

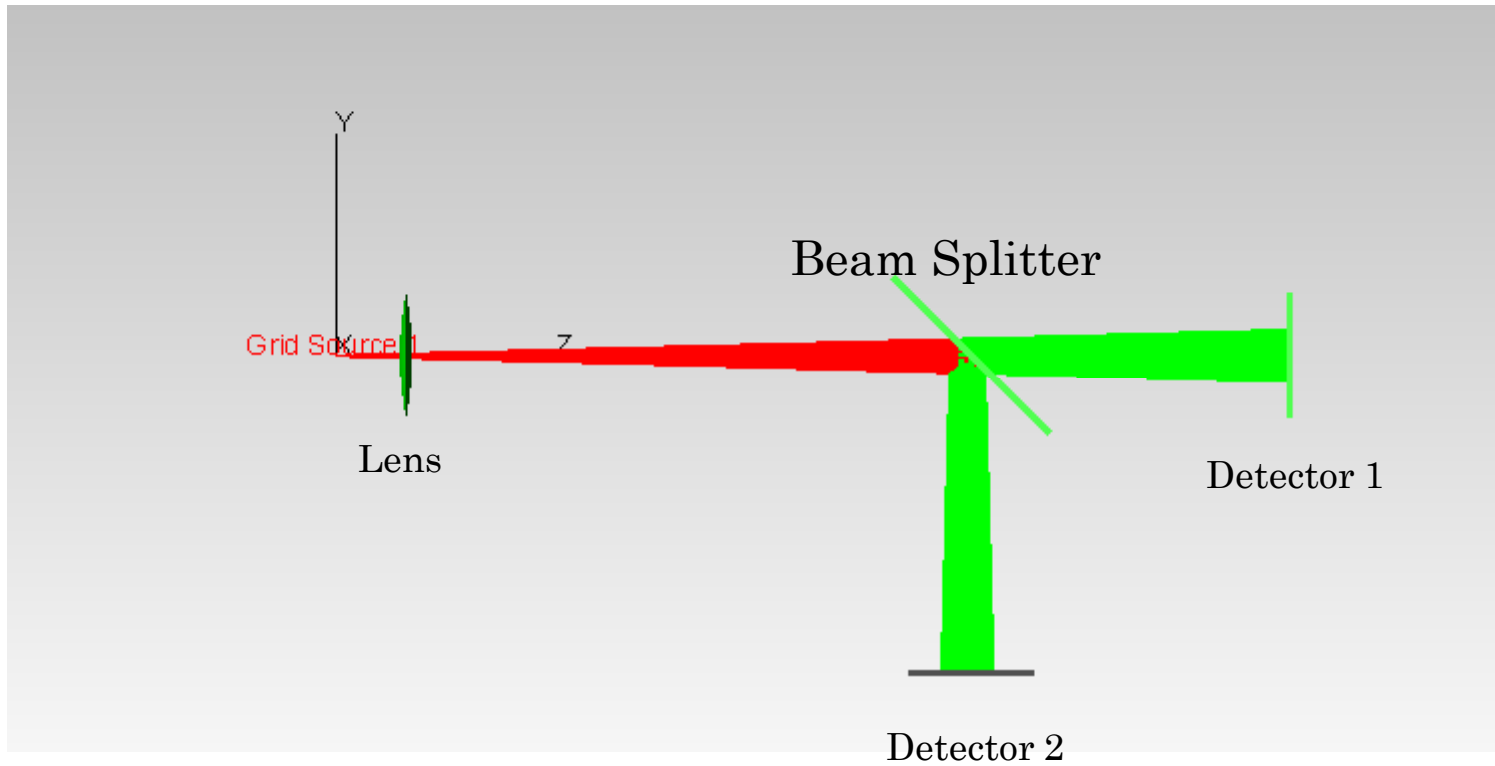
X:
Y:
Z:

Rotation

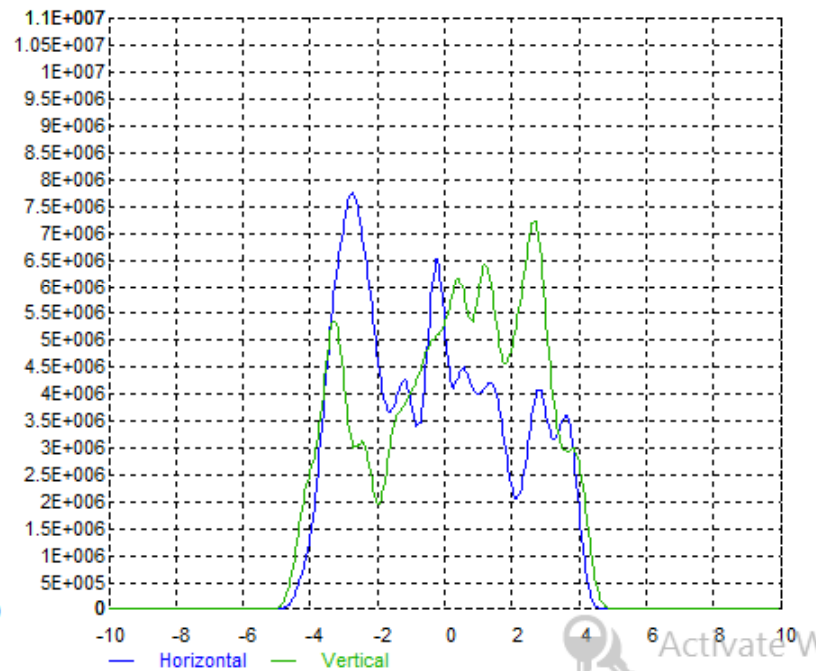
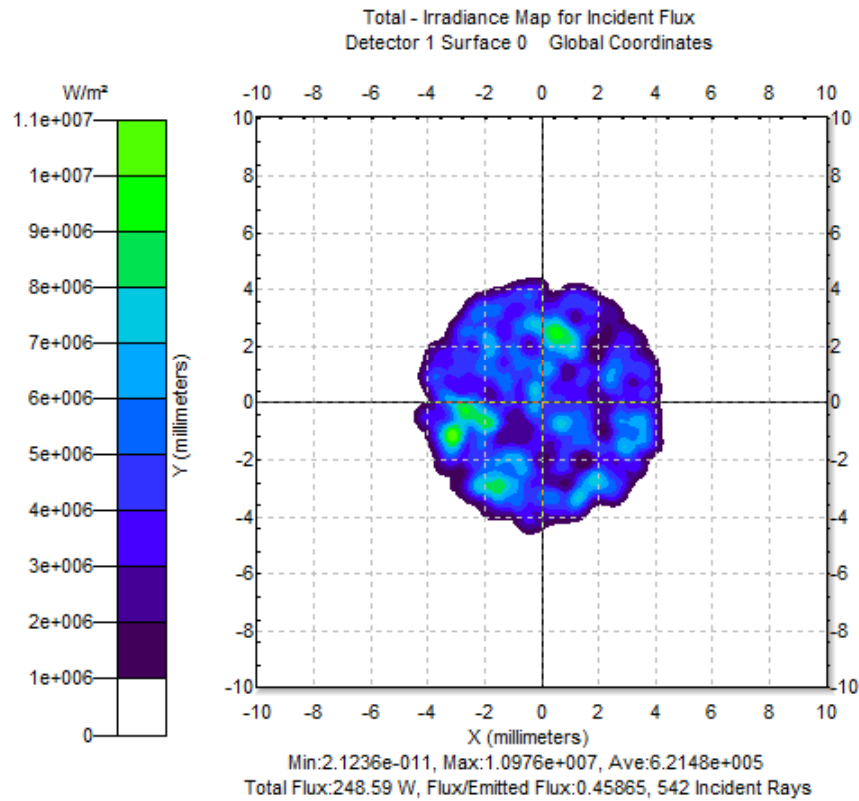
X:
Y:
Z:



FINAL OUPUT



ILLUMINATION MAPS



Activate W
Go to PC setti

