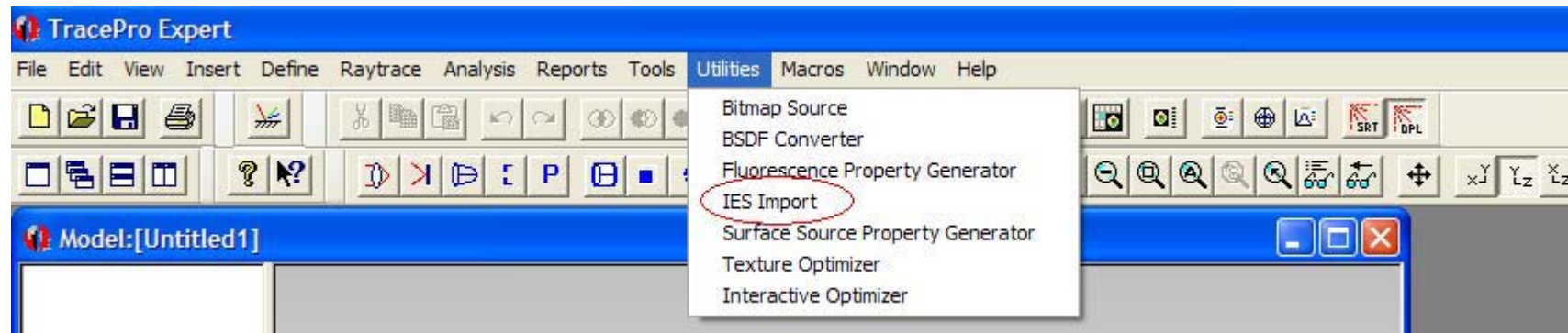


IMPORT/EXPORT Source

- For Importing Source you have to use Utilities Tool of trace Pro.



WHAT IS IES FILES?

- IESNA (Illuminating Engineering Society of North America)
- ASCII text file that contains information on photometric performance
- Available from lighting and luminaire manufacturers
- TracePro uses IESNA LM-63-95
- TracePro reads IES files using the IES Import Utility and exports them from the Candela Plots

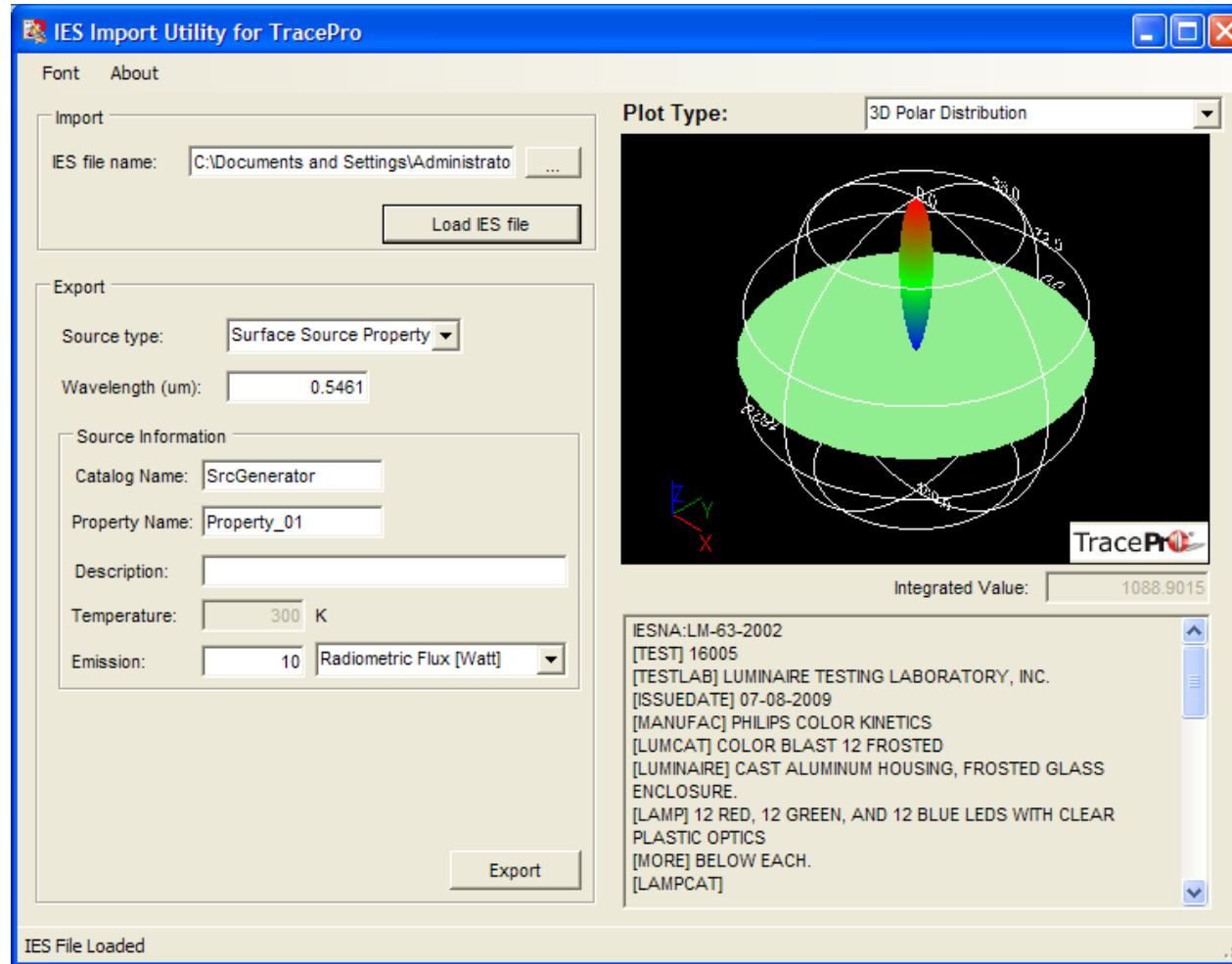
IES file contains information on:

- Descriptive information about the luminaire such as test report and laboratory, manufacturer, catalog number, description, lamp catalog number, and lamp description
- Number of lamps and lumens per lamp
- Number of vertical and horizontal angles
- Photometric Type (Type A, B, or C photometry)
- Unit type (feet or meters)
- Length, width, and height of luminaire
- Vertical and horizontal angles
- Candela values for vertical angles at each horizontal angle

Why Use IES FILES?

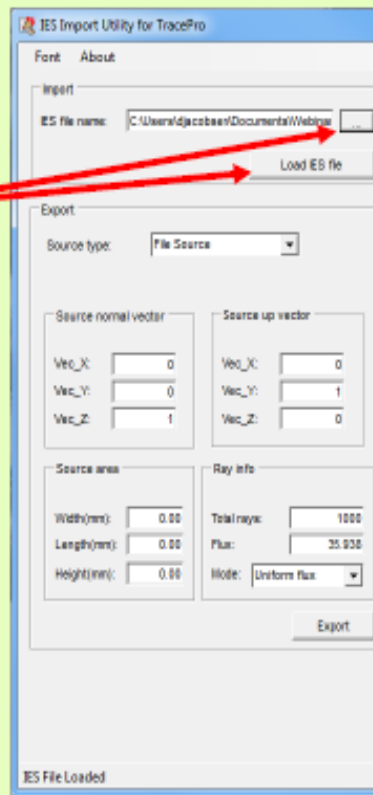
- Readily available from lighting manufacturers
- Standardized way of exchanging photometric data electronically
- Design and optimize luminaire in TracePro, generate IES file, use in lighting visualization program such as LITESTAR 4D
- Data is flux as a function of angle only, may not capture near-field effects
- Spectral information not captured

IES Import Utility

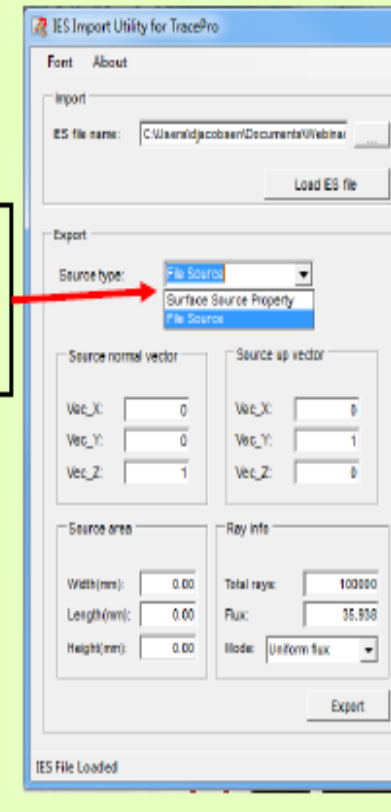


IES Import Utility

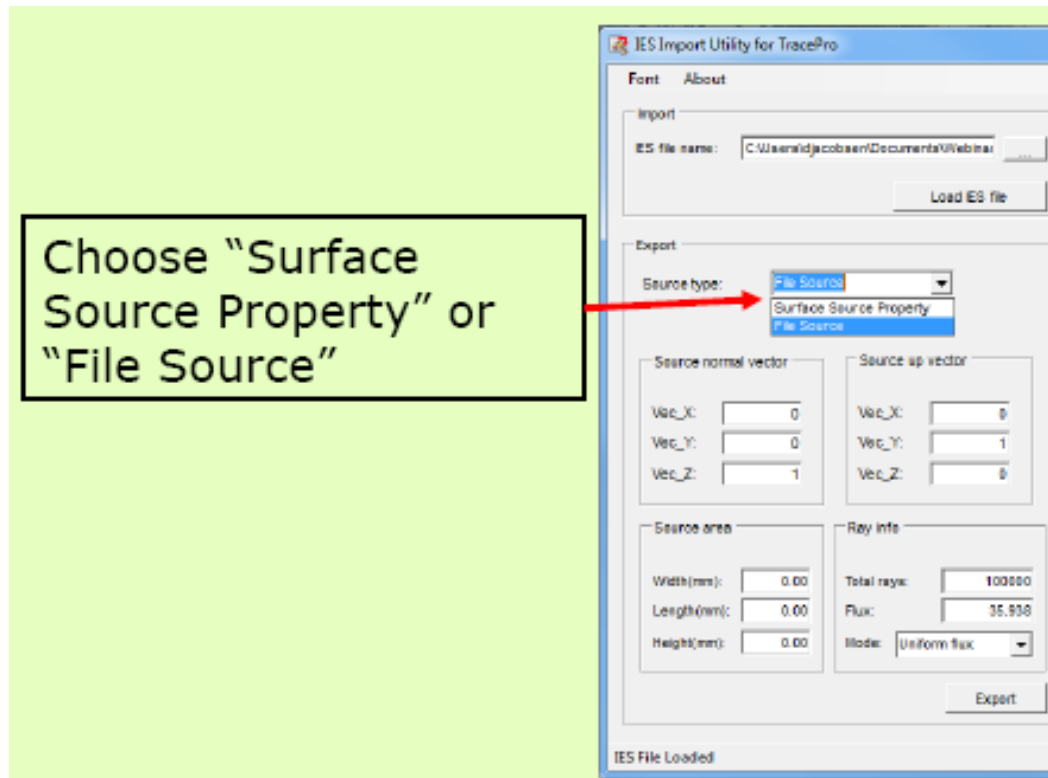
Browse to location of IES file and then click "Load IES file"



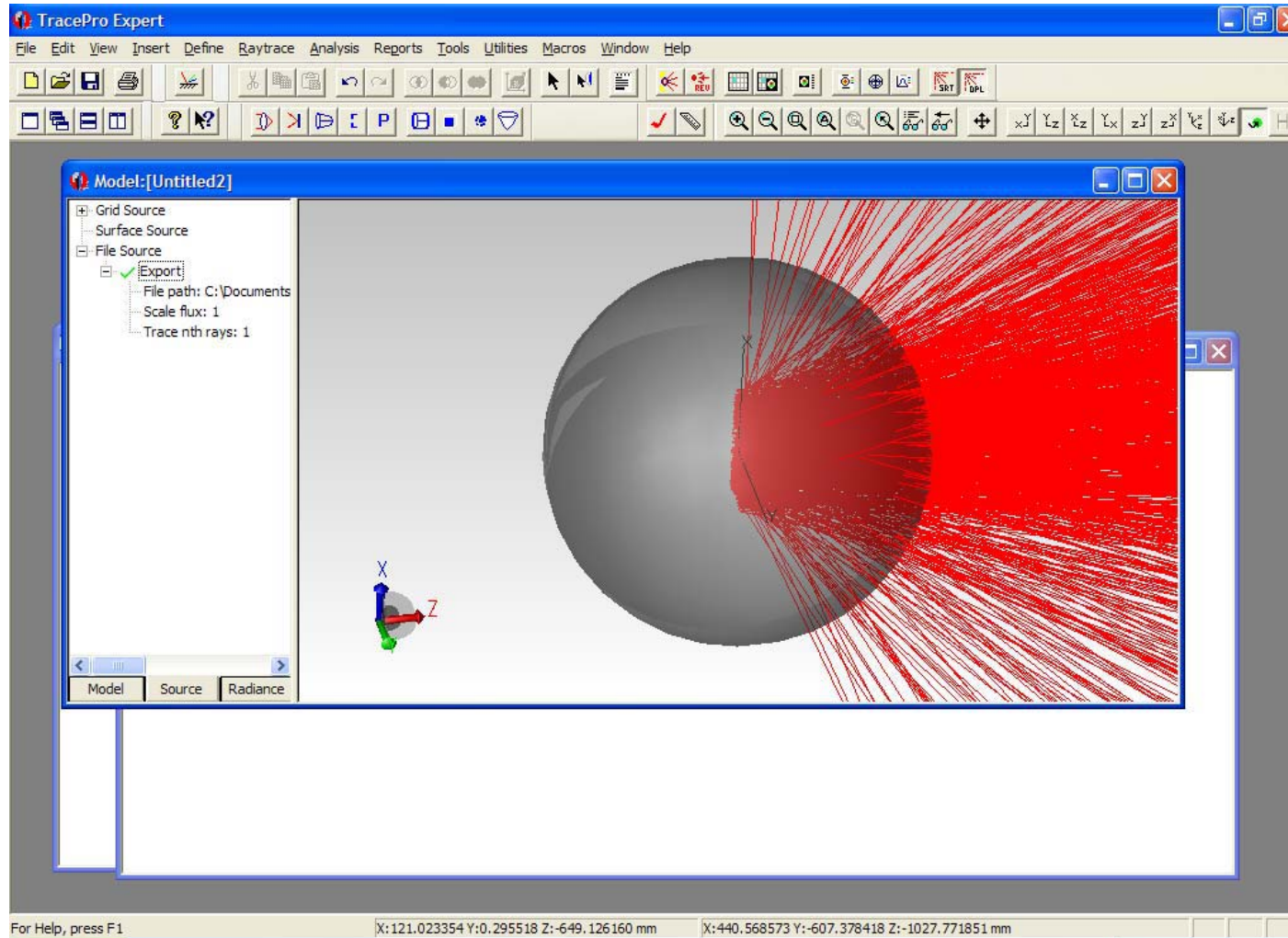
Choose "Surface Source Property" or "File Source"



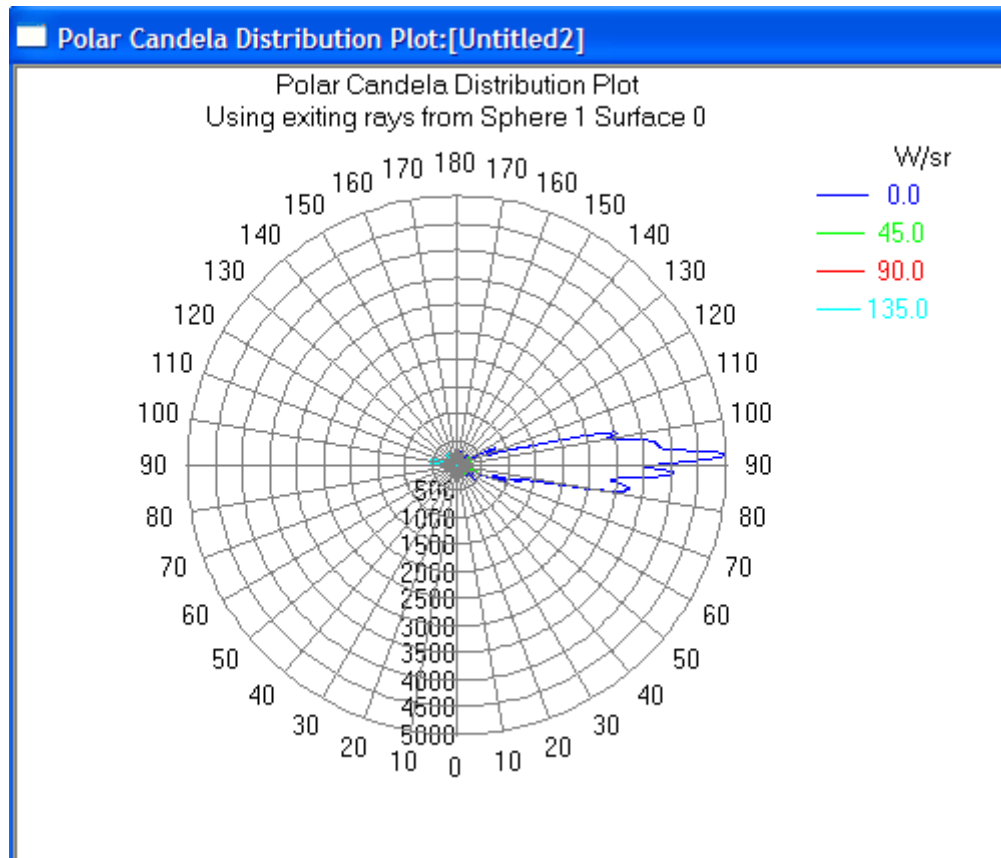
EXPORT IES Files



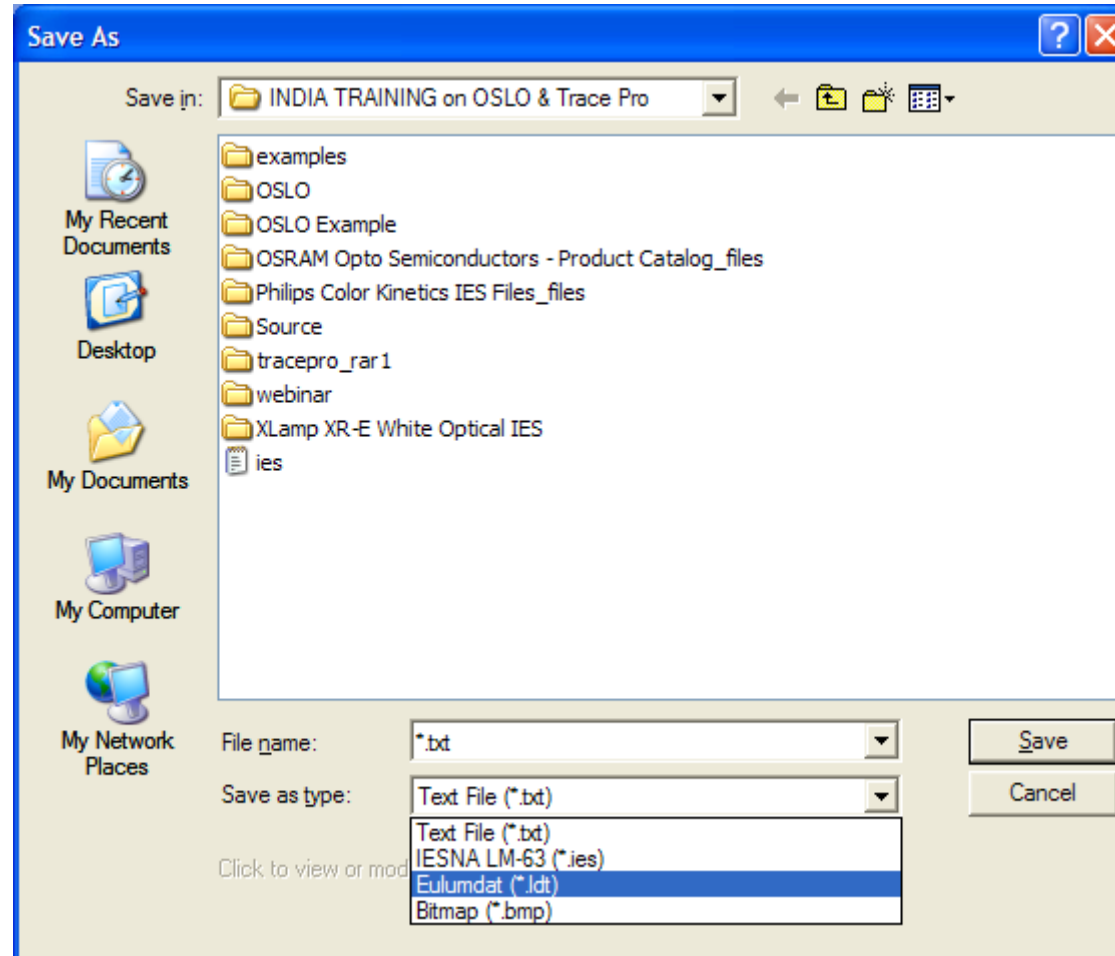
Use IES file in Trace Pro



Analysis



EXPORT IES FILES



How to use EULUMDAT FILES?

- To use Eulumdat files in TracePro they must first be converted to the IES format.
- This can be done with a program such as OxyTech's LITESTAR 4D or other available programs.
- After the Eulumdat file has been converted to an IES file the procedure is the same as for native IES files.

